

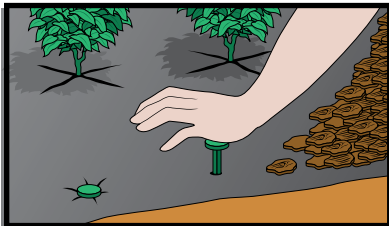
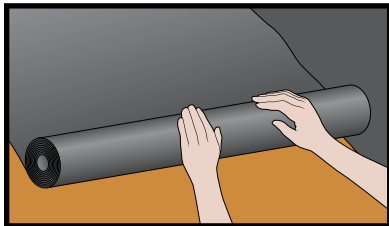
Instillation

WEED CONTROL

Since the fabric is porous there is no top or bottom so placing either side up is correct

Be aware that when rolling out the fabric you can have a positive charge on the fabric that will not allow water to pass through. As soon as you apply product such as mulch or aggregate the static charge will go away and allow passage of water

For proper installation you want to stretch the fabric tight and get the wrinkles out of the fabric



Step #1

Remove weeds and grasses from planting area

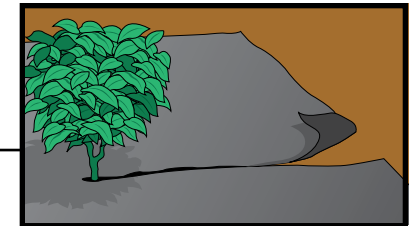
Step #2

Unroll Weed Fabric. Be sure adjacent sections overlap 2" to 3".

Step #3

With new plantings, install fabric first, then cut X's in fabric for planting placement.

If existing plants are taller than 3', cut fabric to the edge and slide around the base of the plant.



If smaller plants are present, lay fabric on top of plants and cut an X or circle over each plant gently push fabric over the top, down to the soil.



Step #4

Anchor edges and seams with fabric pins. Apply 2" to 3" of mulch or stone, deep enough to cover fabric. (Fabric will not withstand UV rays alone and must be covered to prevent degradation.)